

## DEMOGRAPHIC AND SOCIOECONOMIC FACTORS

The most important resource available to a community is its people. As a result, gathering and analyzing data on the population to which the City is responsible is a critical function for knowing and understanding the community. This includes an understanding of the current and projected growth of the community, a socio and demographic profile of the people, and a brief review of data to demonstrate how the community lives.

The following report is a profile of the City of Smithville that includes information on key social and economic statistics such as population growth, industries, housing and workforce trends that are key to understanding Smithville. The purpose of this report is to provide community leaders with unbiased information about strengths and challenges of the community for strategic discussions about the future of Smithville. The analysis is divided into three sections: demographic and socioeconomic factors, employment and industry, and quality of life.

All of the data collected for this analysis was compiled from published information including: federal, state, and local government agencies and private sources.

### Population Estimates and Projections

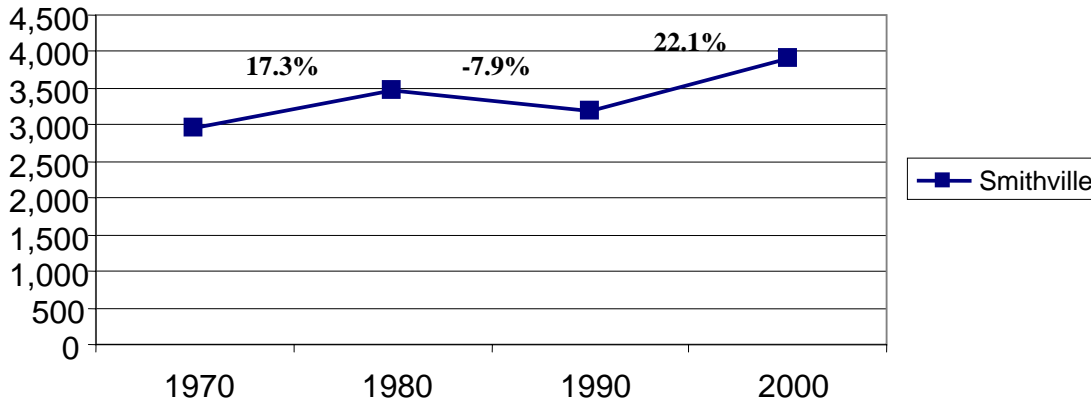
The 1990s brought tremendous growth to central Texas. Bastrop County, one of the fastest growing in the state, grew over 50 percent during the 1990's. Between 1990 and 2000, the City of Smithville grew from 3,196 to 3,901 reflecting an increase of 22.1 percent. This was a marked change from the population decline of the 1980's and the relatively stable population of the prior 30 to 40 years.

Table 2.1: **Population, 1970-2000**

	<b>1970 Census</b>	<b>1980 Census</b>	<b>1990 Census</b>	<b>2000 Census</b>
<b>City of Smithville</b>	2,959	3,470	3,196	3,901
<b>Bastrop County</b>	17,297	24,726	38,263	57,733

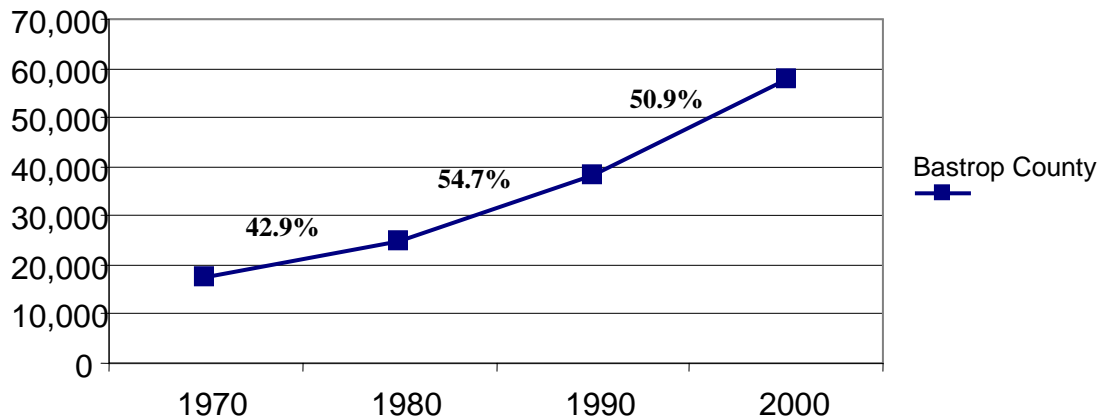
Source: US Census Bureau

Figure 2.1 Census Population and Growth (Smithville) 1970-2000



Source: US Census Bureau

Figure 2.2 Census Population and Growth (Bastrop County) 1970-2000



Source: US Census Bureau

**POPULATION PROJECTIONS**

The Texas State Data Center provides annual population estimates for cities and counties. The current population estimate for the City of Smithville is 4,275, which represents a 9.6 percent growth since the 2000 Census.

There are a number of different methods for population projection used by various state and regional agencies. In the interest of consistency, the Texas State Data Center projections will be used in this report since they represent the official numbers used by the State.

Table 2.2 Population Projections

	2005	2010	2015	2020
<b>City of Smithville</b>	4,275	5,643	6,379	6,799
<b>Bastrop County</b>	68,957	76,195	87,201	99,453

Source: Texas State Data Center, October 2005 Population Projections (0.5 Scenario)

Using historical growth and percent population data, the population of Smithville may grow to the levels depicted in Table 2.3 and Figure 2.2 by 2020.

### AGE

A different understanding of the population can be shown by the age of its residents. The most notable comparison of age cohorts for the City of Smithville, when compared to Bastrop County is for the population 65 years and older. In 2000, nearly 1 of every 5 people in Smithville was over the age of 65, where as Bastrop County as a whole, reported 1 in 10 persons over 65 years.

Table 2.3 Population Percentage by Age (2000)

	Under 19	20-24 years	25 -44 years	45-64 years	65 and older	Median Age (years)
<b>City of Smithville</b>	29.9	4.7	27.2	19.2	19.0	36.8
<b>Bastrop County</b>	30.5	5.0	31.3	22.8	10.2	35.4

Source: US Census Bureau, DP-1. Profile of General Demographic Characteristics and National Center for Education Statistics

Over time, this trend is expected to continue, where as the younger age cohorts for Smithville are expected to remain relatively stable or decline, while the older age cohorts continue to increase. This is reflected in the growth rate at Smithville ISD, which has been slower than the City and declined between 2004 and 2006. As the population ages, it will present a growing challenge for the school district for which it will need to prepare.

### RACE AND ETHNICITY

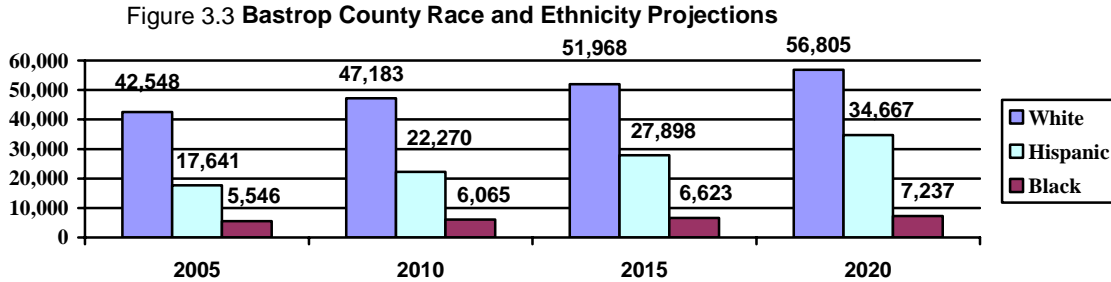
The racial makeup of the City of Smithville is predominately white, with a historical and stable black population and a growing Hispanic influence. In 2000, the Hispanic or Latino population, for the first time was reported as an ethnicity, rather than race. Therefore, a person may identify as White and Hispanic or Black and Hispanic. The percent of the population, in 2000, that identified as Hispanic of any race was 15.7 percent, while 84.6 percent of the population identified as white not Hispanic. Table 2.4 depicts the racial and ethnic distribution of the City in 2000.

Table 2.4 City of Smithville, Population by Race and Ethnicity

Race				Ethnicity	
White	Black	Native American	Asian	Hispanic Of Any Race	Not Hispanic (White alone)
78.0	14.5	0.3	0.4	15.4	84.6

Source: US Census Bureau, DP-1. Profile of General Demographic Characteristics

The trends anticipated for the state follow that expected for Bastrop County. In the coming years, the white and black populations are expected to continue a steady increase, roughly 2 percent annually, while the Hispanic population is expected to double by 2020, from an estimated 17,641 in 2005 to 34,667 in 2020.



Source: Texas State Data Center

Though population, race and ethnicity projections are not available from published sources at the City level, insight to the community’s future profile may be sought from historical and current school enrollment data. According to the Texas Education Agency, the percentage of white, black or Hispanic students in Smithville ISD has not dramatically changed over the past decade. The most interesting trend from the student population is the increasing percentage of students categorized as economically disadvantaged.

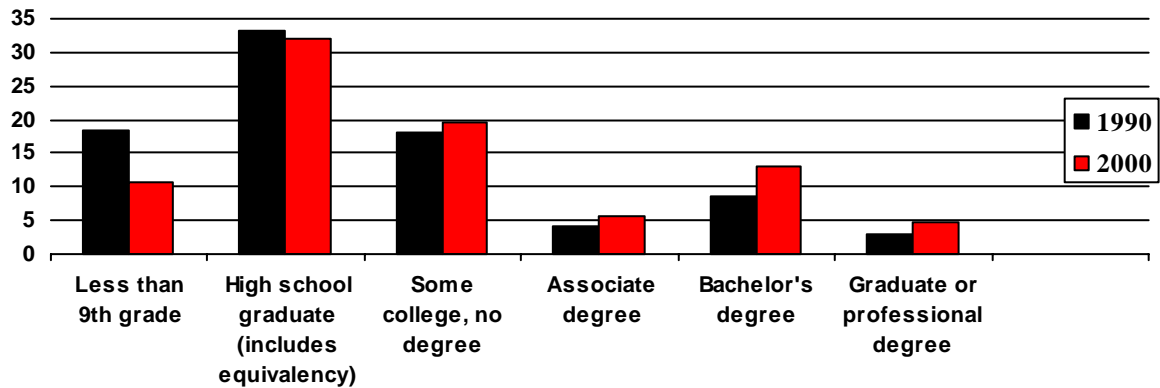
**Table 2.5 Student Population Characteristics – Smithville ISD**

	1996	2000	2004
<b>Total Students</b>	1,624	1,804	1,895
<b>Percent White</b>	69	71	70
<b>Percent Black</b>	13	11	10
<b>Percent Hispanic</b>	18	19	19
<b>Percent Other</b>	0	0	1
<b>Percent Economically Disadvantaged</b>	44.8	39.6	48.1

## EDUCATIONAL ATTAINMENT

The decennial census provides the most comprehensive information about educational

Figure 3.4 City of Smithville Educational Attainment 1990 and 2000



attainment for a community. According to 2000 statistics, educational attainment in the City of Smithville for persons over 25 years of age has improved since the 1990 Census in all areas. Most significant, in 1990, only 8.5 percent of the city's residents held bachelor's degrees, by the 2000, 13.1 percent reported having earned college degrees. On the other end of the spectrum and equally significant is the percent of persons with less than a 9<sup>th</sup> grade education dropped nearly 8 percent during the decade, from 18.3 percent to 10.6 percent.

In comparison, Smithville's educational attainment levels for high school fall below that found in the county, state and nation.

Table 2.6 Education Attainment

	High School Graduate or higher	Bachelor's Degree or higher
<b>City of Smithville</b>	74.9	17.8
<b>Bastrop County</b>	76.9	17.0
<b>Texas</b>	75.7	23.2
<b>United States</b>	80.4	24.4

Source: US Census Bureau

## HOUSEHOLD AND HOUSING

Data on households and housing characteristics provides additional information about the local population. In 2000, there were 1,658 housing units in the City of Smithville of which 89.2 percent were occupied. As shown in Table 2.8, 66.2 percent of the housing units in the city were owner occupied and the average household size in 2000 was 2.53 persons.

Table 2.7 City of Smithville Selected Household and Housing Characteristics

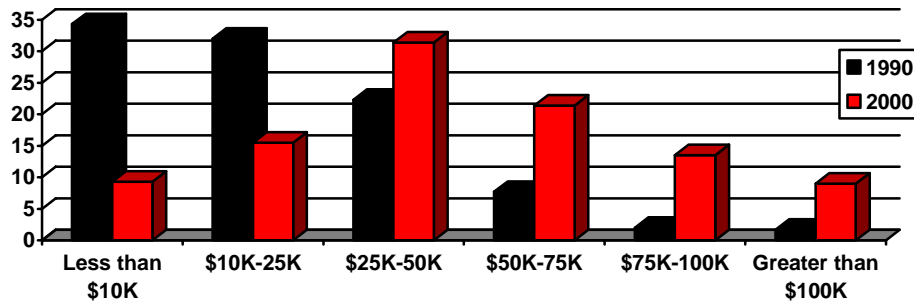
<b>Total housing units</b>	1,658	<b>Percent housing built 1980-2000</b>	10.2
<b>Percent Occupied housing</b>	89.2	<b>Percent housing built 1960-1980</b>	45.3
<b>Percent of housing units occupied by owner</b>	66.2	<b>Percent housing built before 1939</b>	26.2
<b>Percent of housing units occupied by renter</b>	33.8	<b>Median Home Value</b>	\$82,200
<b>Average household size</b>	2.53	<b>Median year Built</b>	1960

Source: US Census Bureau, QT-H1. General Housing Characteristics

The age of the housing stock reflects the relatively slow growth of the city over the past 40 years. Between 1980 and 2000, an average of 8.5 homes was constructed each year in Smithville. To compare, over the same period of time, 58.9 percent of the county's housing units stock was built at an average of 655 homes constructed each year.

INCOME

Figure 3.5 Household Income



The residents of the City of Smithville were more prosperous in 2000 than in 1990. Figure 2.5 is an illustration household income categorized into income ranges. The bars reflect the percentage of households that fall into each range. Over the decade, the total percentage of residents earning under \$25,000 dropped from over 60 percent to less than 25 percent. The number earning over \$50,000 increased from less than 20 percent to approximately 50 percent.

Table 2.8 Income Comparison, 2000 Census

	<b>Median Household Income</b>	<b>Per Capita</b>
<b>City of Smithville</b>	35,586	16,282
<b>Bastrop County</b>	43,578	18,146
<b>Texas</b>	39,927	19,617
<b>United States</b>	41,994	21,587

Source: US Census

## EMPLOYMENT AND INDUSTRY

### INDUSTRIES

Data available on business patterns at the city level is the Census Bureau's Zip Code Business Patterns. Table 2.9 shows the county business pattern for zip code 78957.

Table 2.9 Establishments by Industry Sector (Zip: 78957)

Industry Code	Description	Total Establishments
23	Construction	9
31	Manufacturing	12
42	Wholesale Trade	4
44	Retail Trade	19
48	Transportation and Warehousing	5
51	Information	1
52	Finance and Insurance	6
53	Real Estate and Rental Leasing	5
54	Professional, Scientific & Technical services	11
56	Administrative, Support, Waste Management	4
61	Educational Services	1
62	Health care and social assistance	11
72	Accommodation & food services	10
81	Other services (except public administration)	15
99	Unclassified establishments	1

Source: County Business Patterns, 2004

An analysis of the data for the 78957 zip code, which encompasses an area greater than the City of Smithville, shows that the highest number of establishments in the community were retail trade (NAICS 44) in 2004, the most recent year for which figures are available. The business patterns identified twelve manufacturing establishments in Smithville engaged in the following enterprises: food processing, clothing, sawmills, paper and printing, glass products, fabricated metal and electronic component manufacturing.

Table 2.10 Bastrop County Large Manufacturers

Cen-Tex Marine Fabricators Inc	Elgin Cotton Oil Mill Inc
Acme Brick Co	Alcoa
Elgin Butler Brick Co	Deep In The Heart Art Foundry
Griffin Industries Inc	Texas Foam
W S Erectors Inc	Swiftex Inc
Hanson Brick	

Source: Texas Workforce Commission

### WORKFORCE

According to the most recent civilian labor force estimates from the Texas Workforce Commission, Bastrop County had a civilian labor force of 34,189 which was an increase of 4,522 people since 2003. This change represented an increase of 15.2 percent over the past 5 years. The employment numbers for the County have kept pace with the growing workforce increasing 13.9 percent over the same period.

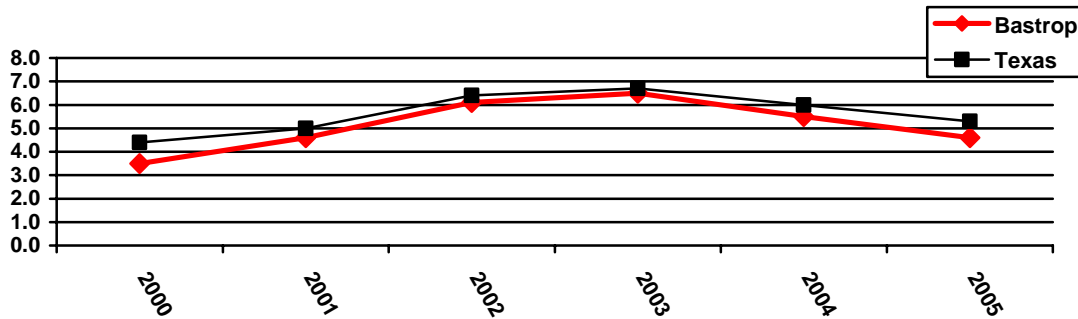
Table 2.11 Averaged County Employment Characteristics

	2000	2001	2002	2003	2004	2005
Civilian Labor Force	29,667	30,468	31,548	32,534	33,201	34,189
Employed	28,635	29,077	29,620	30,434	31,379	32,617
Unemployed	1,032	1,391	1,928	2,100	1,822	1,572
Unemployment Rate	3.5	4.6	6.1	6.5	5.5	4.6

Source: Texas Workforce Commission, Labor Market Information Department. Covered Employment and Wages

The unemployment rate, in Bastrop County, for the past 5 years is provided in Figure 2.6 follows that of the state. The lowest average annual rate for the County, over these years, was 3.5 percent in 2000, while the highest rate, 6.5 percent, was recorded in 2003.

Figure 2.6 County and State Unemployment Rates: 2000-2005



Source: Texas Workforce Commission

Commuters represent another pool of available labor in the area: skilled workers leaving the community for work. According to the 2000 Census, Smithville workers median travel time to work was between 15 and 19 minutes. As seen in Table 2.12, in 2000, Smithville had a workforce of 1,587, of which 717, or 45.2 percent, worked in the City and 1,086, or 68.4 percent, worked within the county. This is significantly different from the County as a whole, where 53 percent of the employees travel to Travis County for employment.

Table 2.12 Smithville Commuting Patterns

Workforce > 16 years of age	1,587	Drive alone to work	1,154
Work in Bastrop County	1086	Median travel time to work	15 to 19 minutes
Work in Smithville	717		

Source: US Census

## QUALITY OF LIFE

Quality of life elements are those things which set a community apart from its neighbors and competitors. This section provides an overview of several of the factors which impact quality of life, including education, cost of living, housing costs, crime and access to healthcare.

### EDUCATION

Smithville ISD is the school district that serves students living in the eastern portion of Bastrop County. The district has four campuses: Brown Elementary, Smithville

Elementary, Smithville Junior High, and Smithville High School. According to Smithville ISD, district enrollment for August 2006 was 1,842, a decline of 43 students reported during the 2004 school year.

Each year, schools in Texas are rated based on a number of performance measures such as student performance on the state mandated skills test, attendance and passing rates. The generalized ratings in decreasing order are: Exemplary, Recognized; Academically Acceptable, and Academically Unacceptable. The Smithville school district earned an accountability rating of academically acceptable for the years listed below. It is interesting to note, approximately 50 percent of the districts in the state are rated Academically Acceptable.

In addition to these ratings, there are other indicators of school performance. Table 2.13 depicts school performance data for the years 1996, 2000 and 2004. (Note: education demographics are presented in Table 2.6)

Table 2.13 **Selected School District Performance Ratings 1996-2004**

	School Year		
	1996	2000	2004
Accountability Rating	Academically Acceptable	Academically Acceptable	Academically Acceptable
4 year drop out rate percent	N/A	9.3	2.9
Percent Graduated	N/A	79.8	86.4
Percent Students Passing all standardized tests taken	58.5	78.9	71.0
SAT: Mean Total Score	826	990	941
ACT: Mean Composite Score	19.3	20.6	19.0
Students to Teacher ratio	13.2	13.0	13.1
Total Instruction cost per student	\$2,759	\$3,411	\$4,013

Source: <http://www.tea.state.tx.us/perfreport/snapshot/index.html>

## CRIME

In the City of Smithville, in 2001 there were 3 crimes reported for every 100 persons. This statistic is increasing, as the most recent data shows in 2005, 4.7 crimes per 100 persons.

Table 2.14 **City of Smithville Crime Statistics**

	Aggravated Assault	Burglary	Larceny	Rape	Robbery	Total Reported	Crime Reports per 100
2001	10	27	73	0	1	118	3.0
2003	12	48	160	6	5	238	5.5
2005	17	31	148	5	1	205	4.7

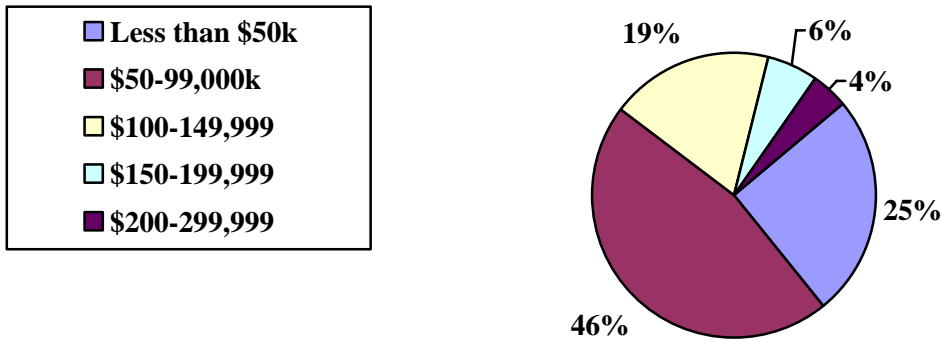
Source: Texas Department of Public Safety

**HOUSING VALUE**

The rising cost of housing in the Central Texas is an issue of importance for all communities in the area. In 2000, the median home values in the City of Smithville were \$82,200, a value when compared to Bastrop County’s \$106,900.

As shown in Figure 2.7, nearly half of the homes in Smithville are valued between \$50,000 and \$99,000, and 1 of 4 homes is valued at less than \$50,000. This may be due to age of the housing stock (Table 2.7) or the influence of manufactured housing where in many cases, ownership of the home does not constitute ownership of the land where the home is placed.

Figure 2.7 **City of Smithville Housing Value**



Source: 2000 US Census

**PROPERTY TAX**

One factor that can have a significant impact on cost of living is property taxes. Comparing property taxes between Smithville and neighboring communities is varies widely. Table 2.15 provides estimates of the 2005 property tax rates for cities near Smithville.

Table 2.15 **Area Property Tax Rates**

City	City	County	School
Smithville	.440	.633	1.6183
Bastrop	.5835	.606	1.622
LaGrange	.257	.456	1.4025
Giddings	.417	.567	1.6162
Elgin	.694	.633	1.65

**SALES TAX**

The sales tax is a major source of revenue for taxing jurisdictions in Texas. The state sales and use tax rate is 6.25 percent. Under state law, local taxing jurisdictions are allowed to add up to an additional 2 percent to the state rate, for a maximum combined total of 8.25 percent. This 2 percent local tax can be comprised of a combination of taxes levied by cities, counties, special districts, and transit authorities. The City of Smithville collects 1.5 percent of sales tax and Bastrop County collects 0.5 percent.

Over the past 13 years, the city's gross sales have increased from 33.5 million in 1993 to 46.3 million in 2005. The county has also seen even greater results, increasing sales tax revenues 279 percent since 1993.

